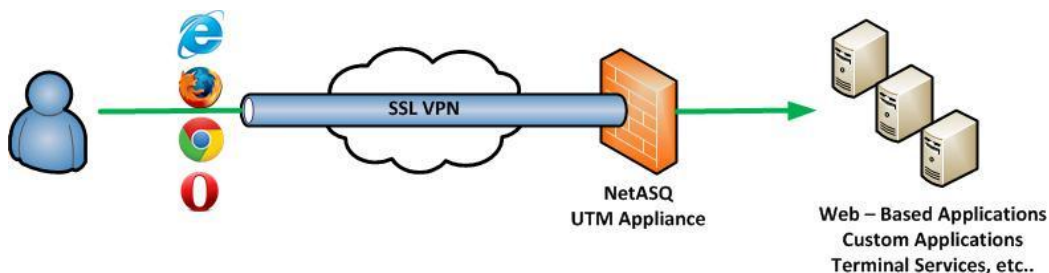




# SSL VPN – NetASQ

Virtual private networks (VPNs) have become the solution of choice for enterprises which require mobile access and site interconnect. NETASQ solutions are designed to deliver roaming access without compromising your security.

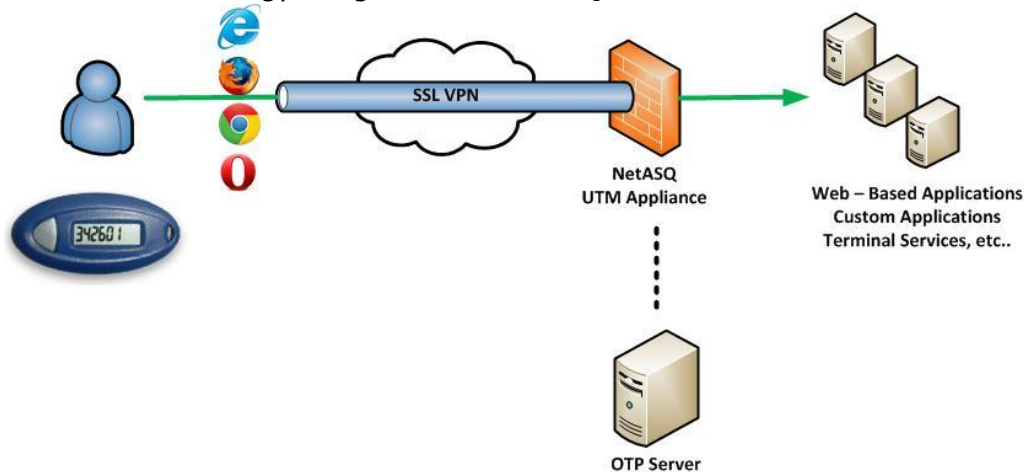
Connection devices for roaming networks now range from portable PCs and smartphones to public computers. NETASQ firewalls support VPN SSL. A simple browser allows users to access the network from any computer.



NETASQ's VPN SSL supports two access modes, on the one hand allowing users to access web applications such as web mail and intranet servers and on the other, enabling mobile applications such as roaming access to office networks.

The administrator can define profiles on a per-user basis to ensure access is restricted only to authorized personnel.

Connections crossing this VPN tunnel are secured by the native intrusion prevention technology integral to all NETASQ firewalls.



For even higher security, it is recommended to strengthen the authentication policy by using One-Time-Password (OTP) technologies.

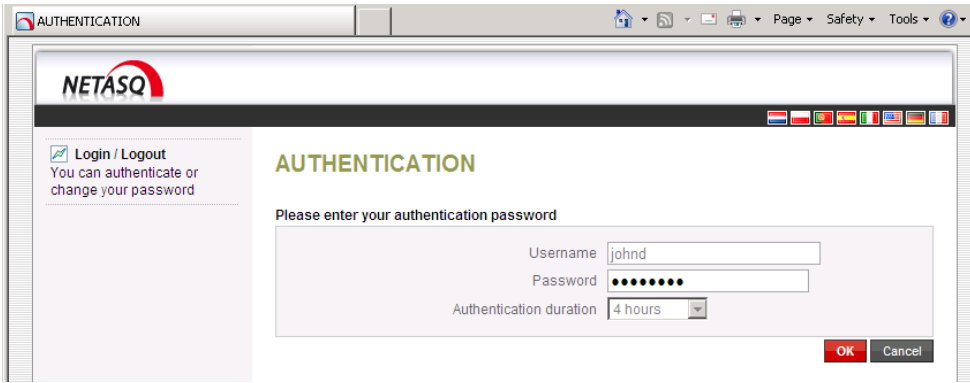
One-Time-Password technology replaces user's static password with a device-generated One-Time-Password. Thus password loss or theft alone is not a factor that can breach network and VPN security.

## SSL VPN Key Benefits

- ✓ Ability to connect from any device using a web browser
- ✓ No client software or setup is required
- ✓ Deliver exceptional security levels
- ✓ Easy to use. No training needed
- ✓ Can be integrated with OTP technology for higher authentication security
- ✓ Access policies per user or user group
- ✓ Protection for all data-flow via the tunnel
- ✓ Combined with security features of IPS, Bandwidth Management, Email and Web scanning, URL filtering of Netasq UTM appliances.

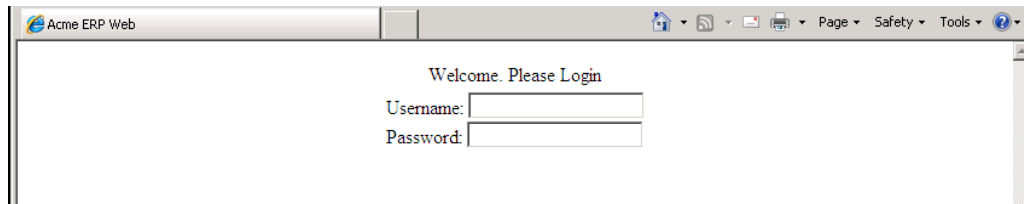
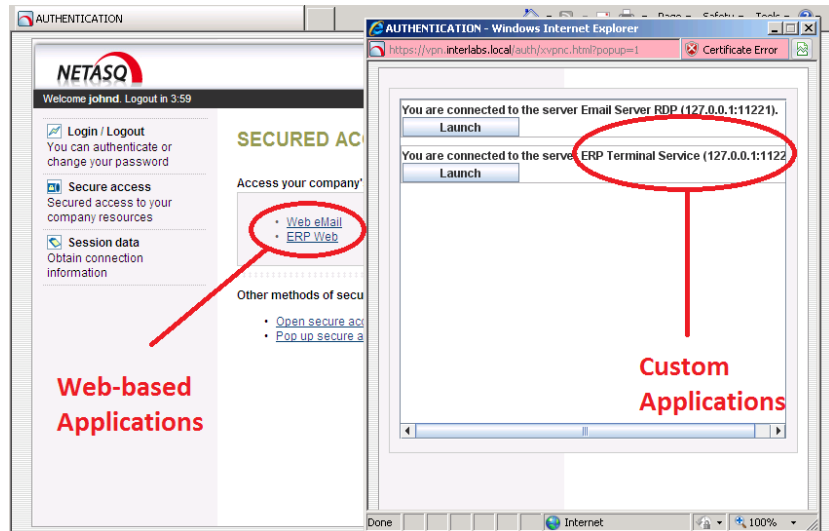
**NETASQ**  
we secure IT

**VASCO**  
THE AUTHENTICATION COMPANY



Roaming User connects to public IP of the firewall (static or e.g via DynDNS), using a web browser. Authenticates with correct username and password (preferably OTP for greater security).

Each user can be given access to specific Web-based and/or custom with single click or use custom application clients (like Terminal Services Client) to connect to server applications.



Web-based links open directly into browser.

[Launch] button can be used to directly open and tunnel the client application, like Microsoft Terminal Client.

